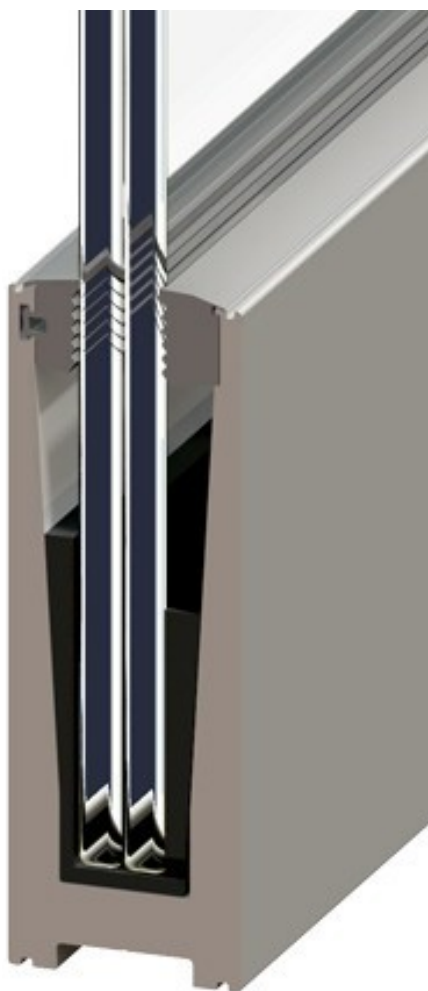
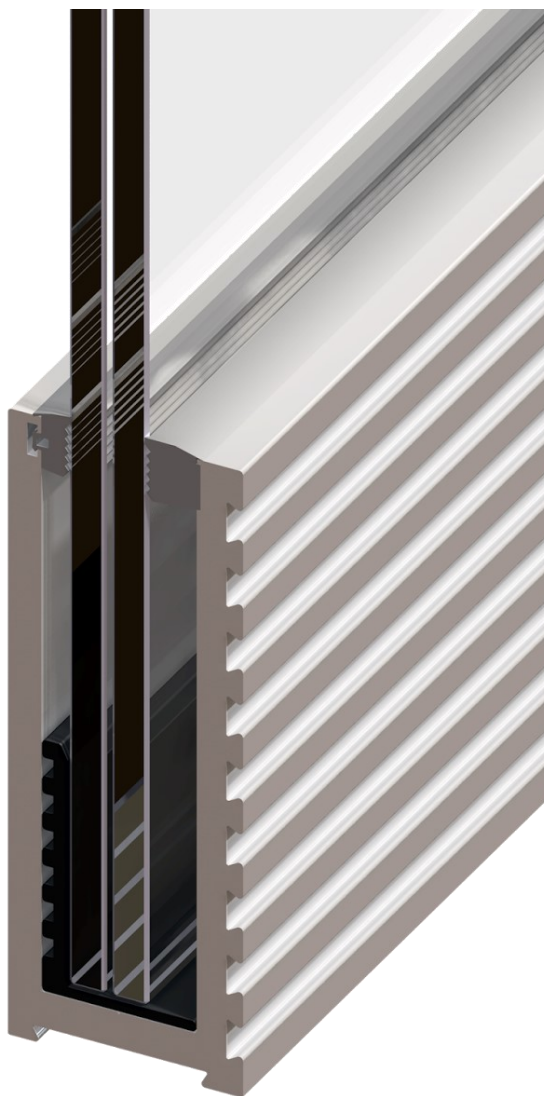


SAFEGLOSS

SYSTEME DE GARDE-CORPS



WWW.BFC-LU.COM



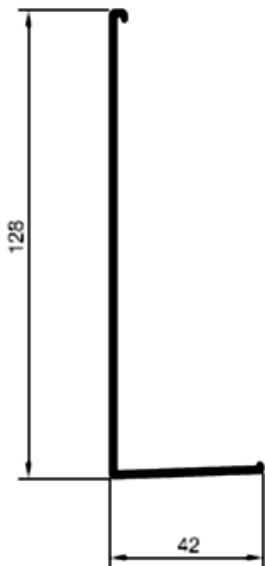
SAFEGLASS



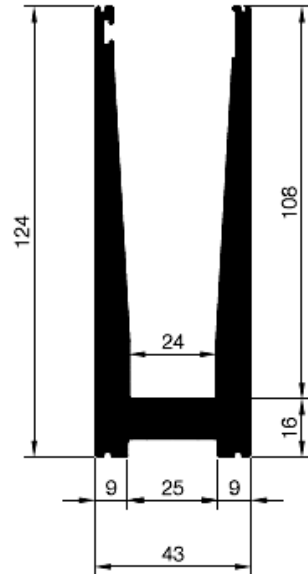
C.100 SAFEGLASS



C.100.002



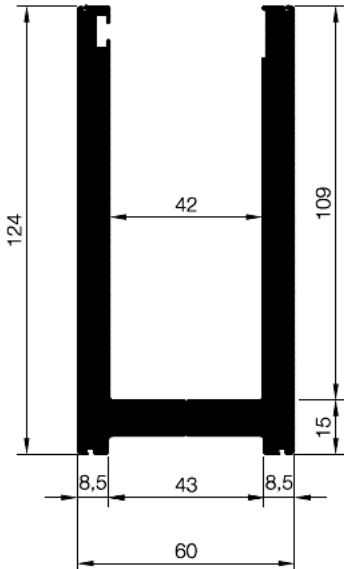
C.100.003



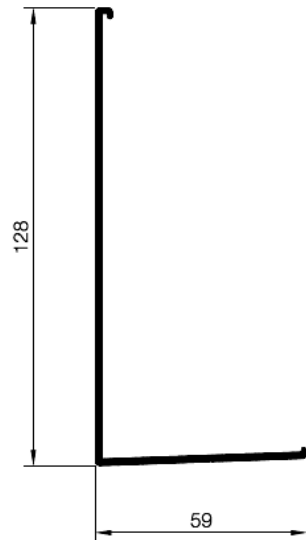
C.100 SAFEGLASS



C.100.004

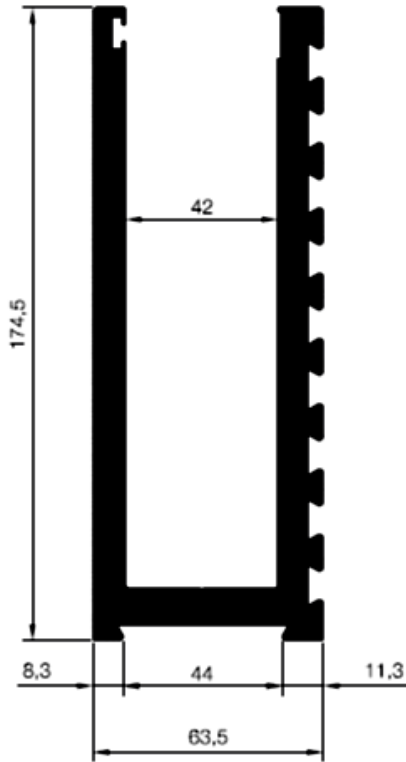


C.100.005

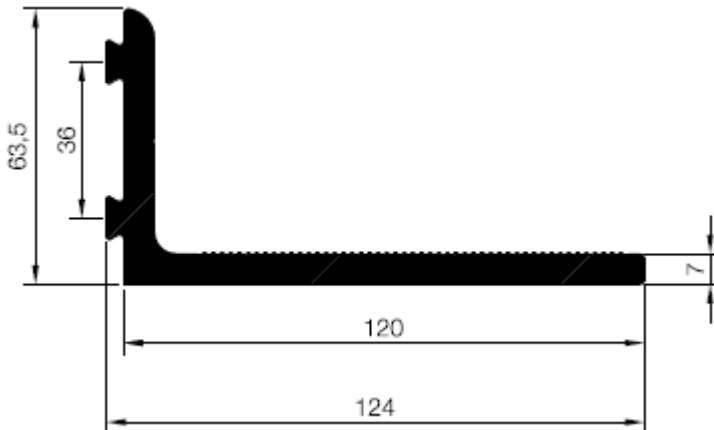


C.100 SAFEGLASS

C.100.006

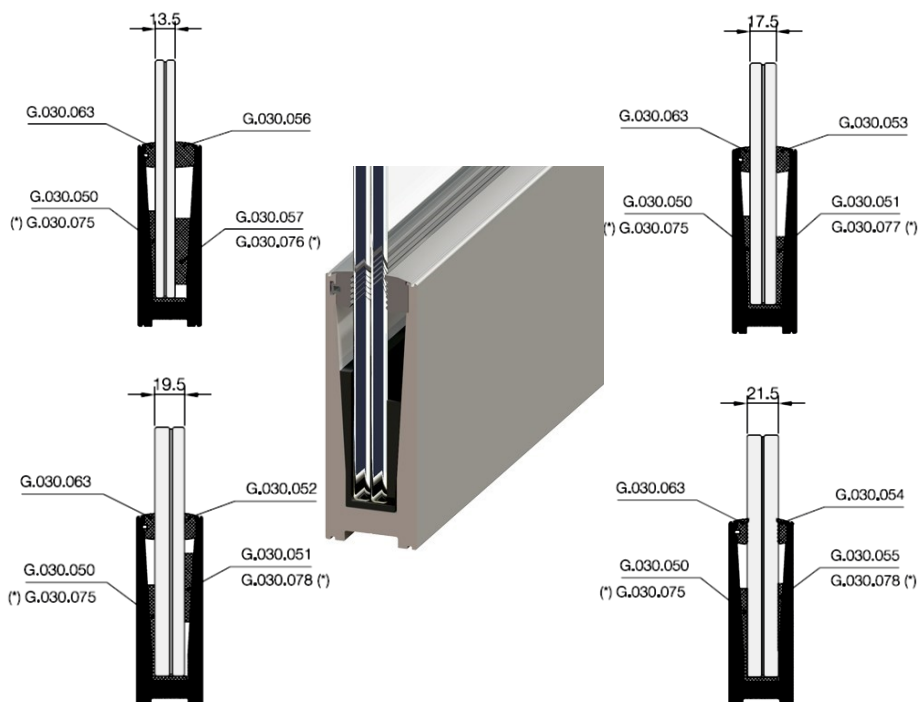


C.100.007



C.100 SAFEGLASS

C.100.003



CAPACITÉ DU VITRAGE

- Périmètres pour piscines:
- Pour le résidentiel:
- Lieux de prestation de services:
- Lieux publics:

- vitrage de 12 mm
- vitrage de 16 mm
- vitrage de 18 mm
- vitrage de 20 mm

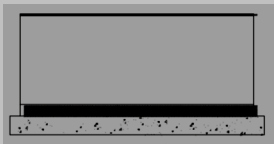
Nous recommandons l'utilisation de verre tempéré feuilleté, cales en EPDM (75/80 Shore A) de dureté très élevée et joints TPE gris.

RÉSULTATS D'ESSAI

Rapport d'essai nr. HG 006/12

Organisme notifié nr. 2211

- Module fixé sur dalle;
- Vitrage tempéré feuilleté: 8.8.4 (17,52mm)



Dimension: 2500mm x 1100mm

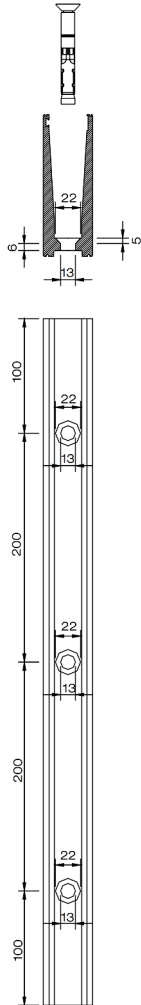
C.100 SAFEGLASS



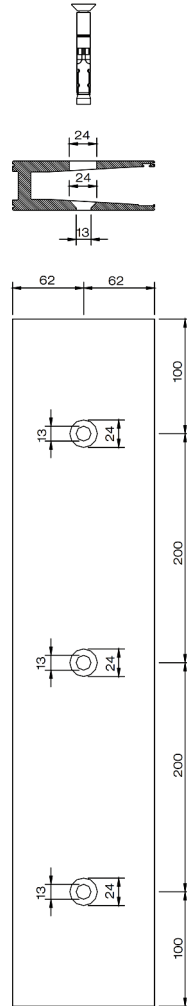
C.100.003

2 systèmes de fixation profil

Systeme V



Systeme H



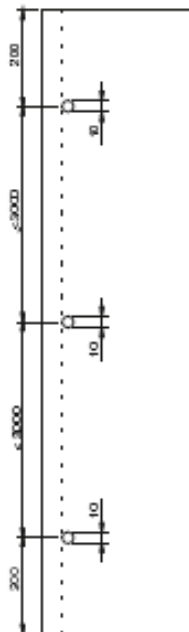
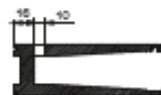
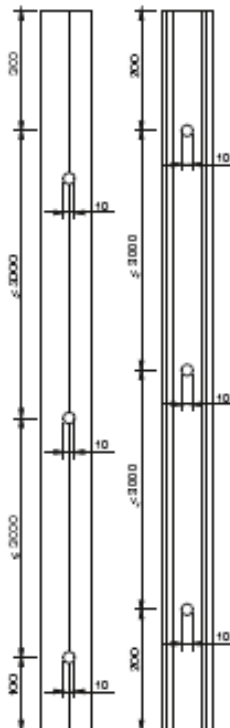
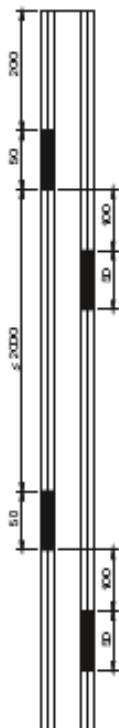
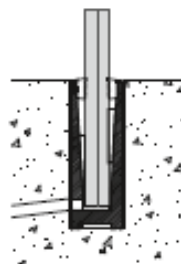
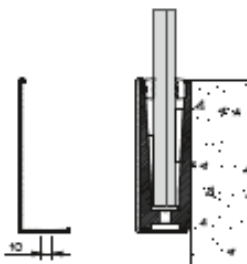
Toutes les mesures effectuées sont en millimètres (mm).

C.100 SAFEGLASS

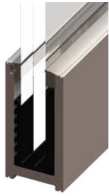


C.100.003

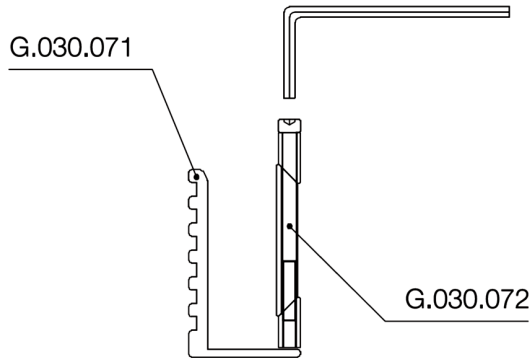
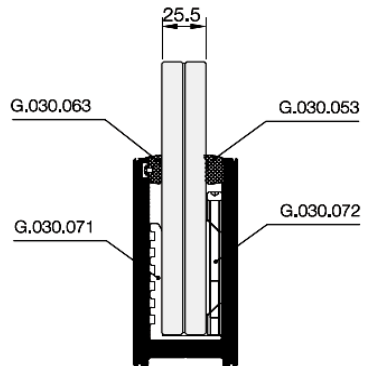
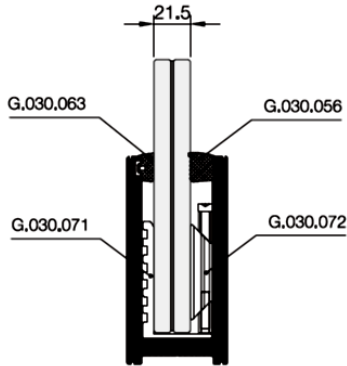
PLANS DE DRAINAGE



C.100 SAFEGLASS



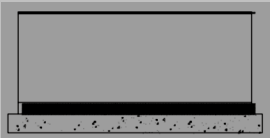
C.100.004



RÉSULTATS D'ESSAI

Rapport d'essai nr. OEF 006/12

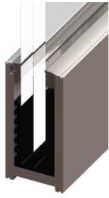
Organisme notifié nr. 2211



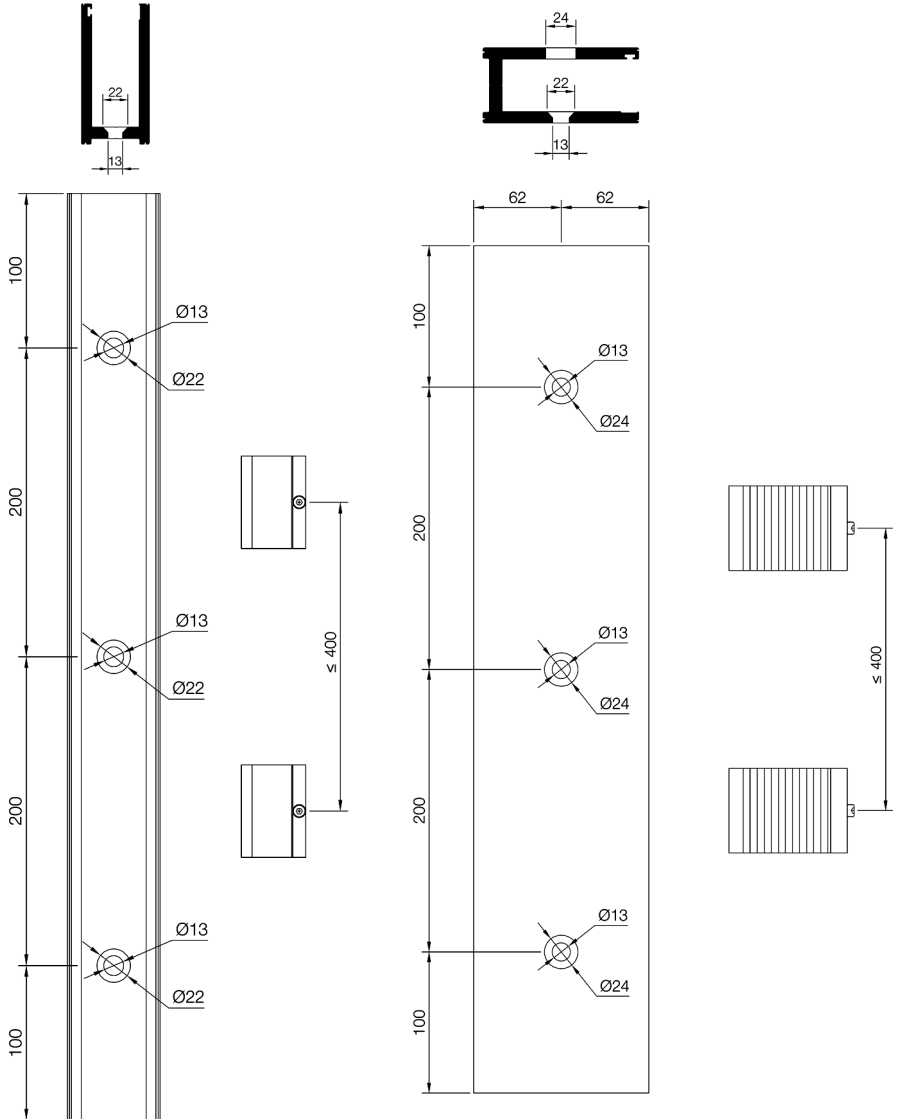
- Module fixé sur dalle;
- Vitrage tempéré feuilleté: 12.12.4 (25,52mm)

Dimension: 2500mm x 1200mm

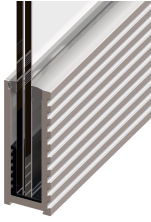
C.100 SAFEGLASS



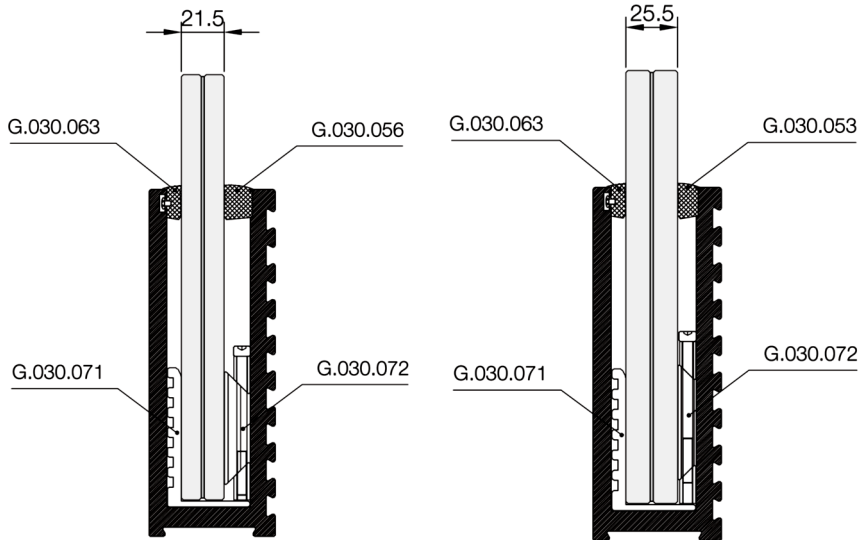
C.100.004



C.100 SAFEGLASS

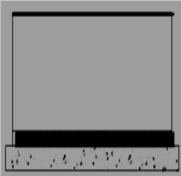


C.100.006



RÉSULTATS D'ESSAI

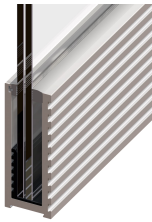
Rapport d'essai nr. OEF 022/17 Organisme notifié nr. 2211



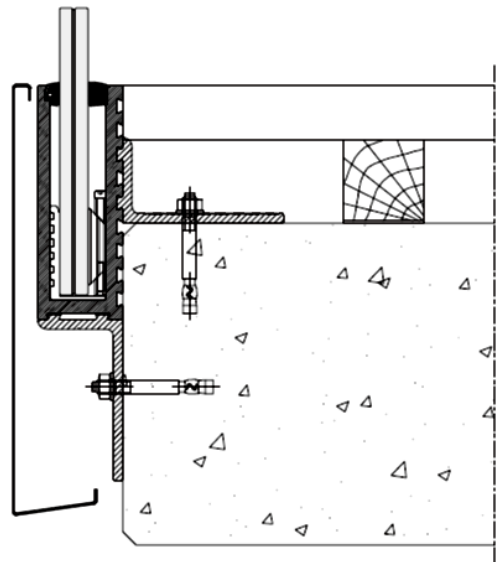
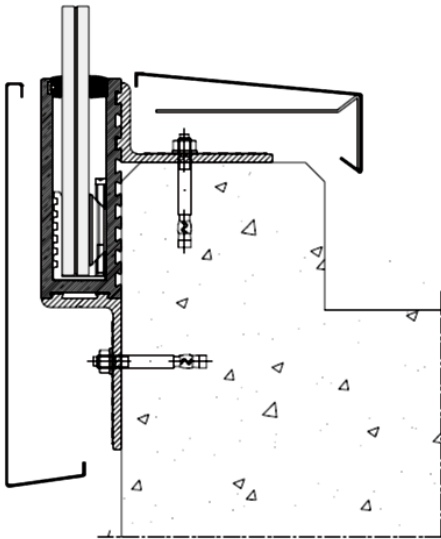
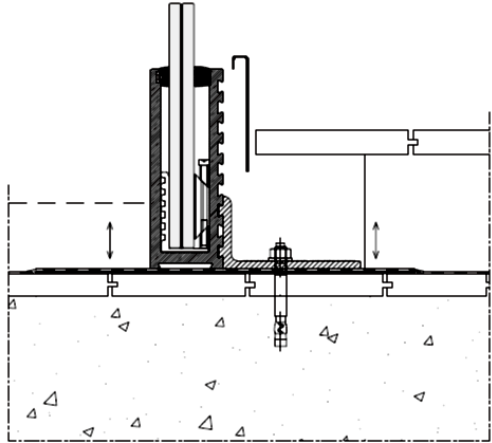
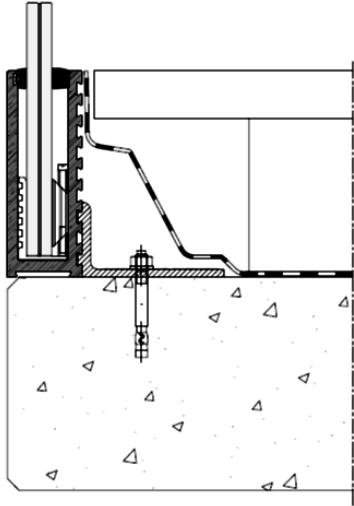
- Module fixé sur dalle;
- Vitrage tempéré feuilleté: 12.12.4 (25,52mm)

Dimension: 2500mm x 1800mm

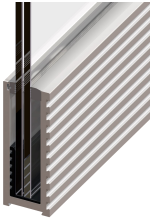
C.100 SAFEGLASS



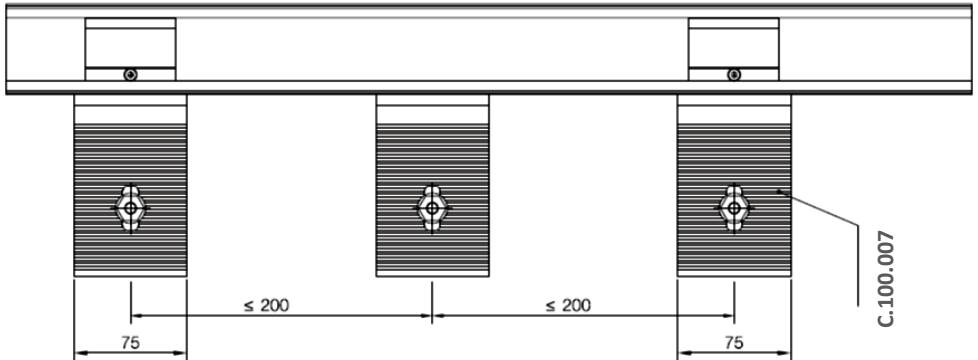
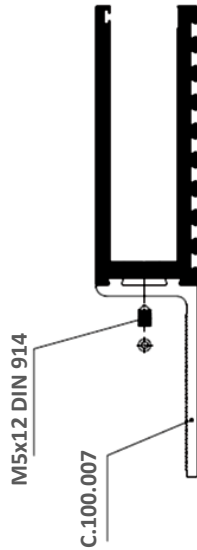
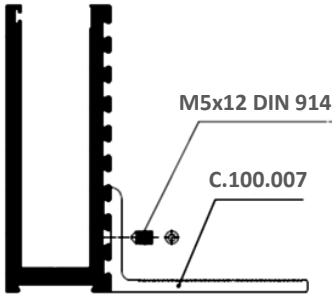
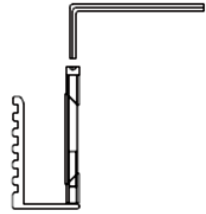
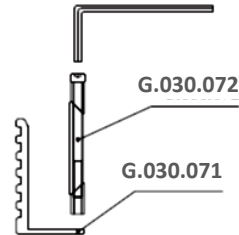
C.100.006



C.100 SAFEGLASS



C.100.006



C.100 SAFEGLASS



C.100.003

ACCESSOIRES

G.030.050
Cale Inf. EPDM



Noir

G.030.051
Cale Lateral EPDM
16-18mm



Noir

G.030.052
Joint Sup. Int.
18mm



Noir / Gris

G.030.053
Joint Sup. Int.
16mm



Noir / Gris

G.030.054
Cale Inf. EPDM
20mm



Noir / Gris

G.030.055
Cale Lateral EPDM
20mm



Noir

G.030.056
Joint Sup. Int.
12mm



Noir / Gris

G.030.057
Cale Lateral EPDM
12mm



Noir

G.030.063
Joint Sup. Ext.



Noir / Gris

G.030.061
Couvercle p/C100003



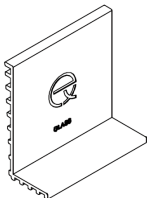
G.618.1090
Outil pour montage
de verre



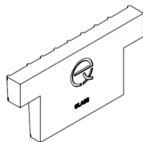
G.019.402
Cheville M8x125



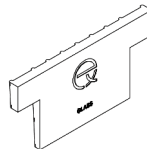
G.030.075
Cale Nylon



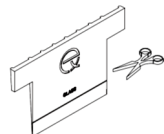
G.001.076
Cale lateral Nylon



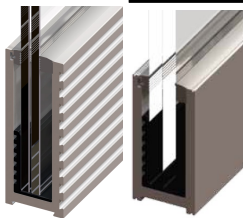
G.030.077
Cale lateral Nylon



G.030.078
Cale lateral Nylon



C.100 SAFEGLASS

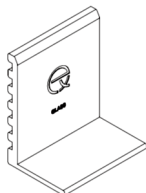


C.100.006

C.100.004

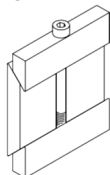
ACCESSOIRES

G.030.071
Cale Nylon



C.100.004 / C.100.006

G.030.051
Cale Lateral EPDM
16-18mm



C.100.004 / C.100.006

G.030.052
Couverture p/C100004
18mm



G.030.062
Pièce Fixation



G.001.064
Couverture p/C100008



G.001.072
Joint U - Verre 18



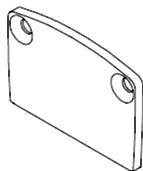
G.030.062
Joint U - Verre 21.5



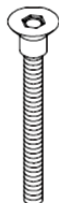
G.030.062
Joint U - Verre 25.5



G.001.064
Couverture p/C100009

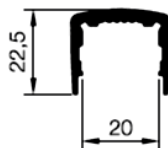


G.030.062

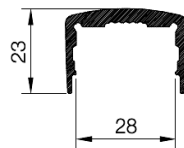


Inox

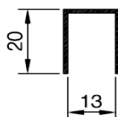
C.100.008



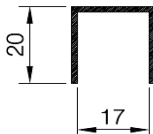
C.100.009



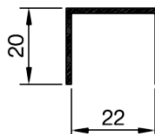
D.008.021



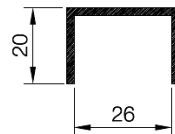
D.008.015



D.008.019

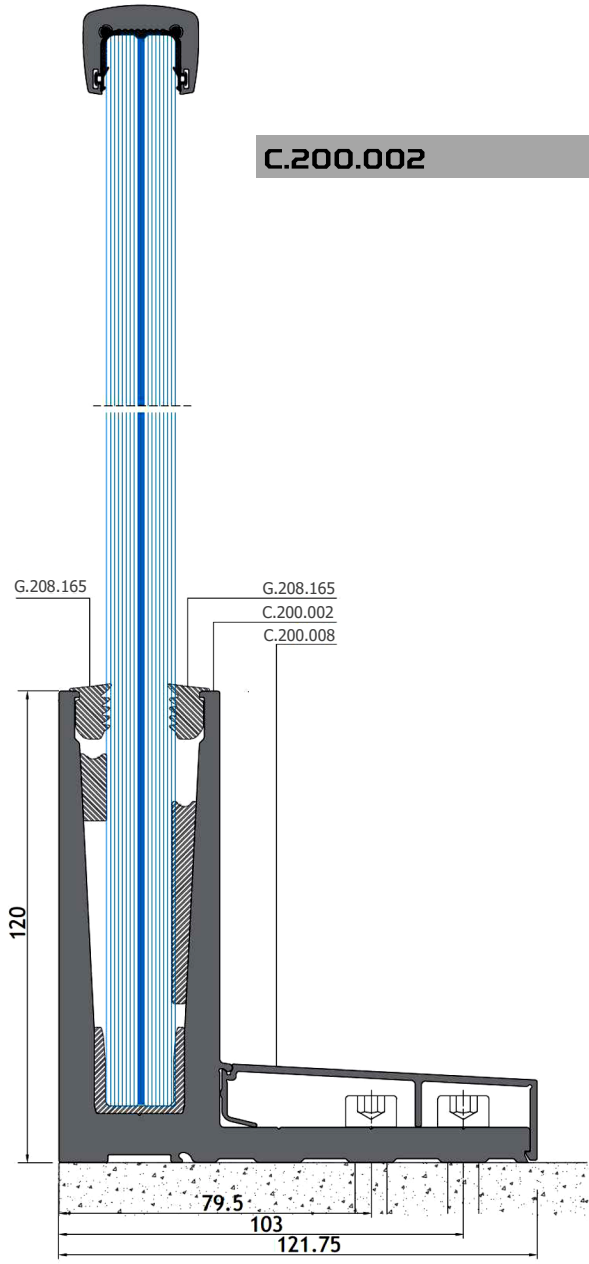


D.008.040



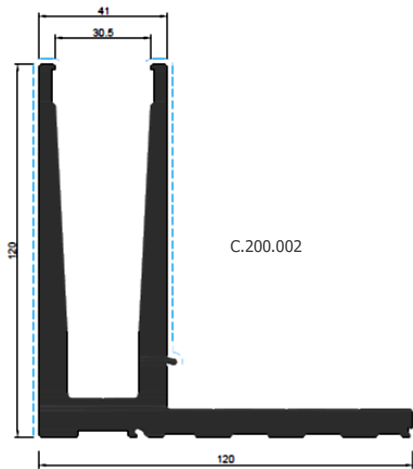
C.200 SAFEGLASS

C.200.002

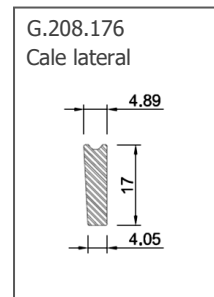
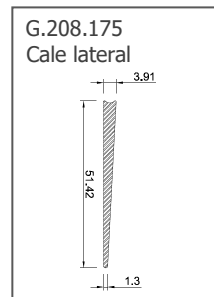
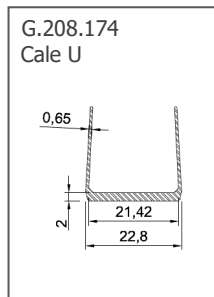
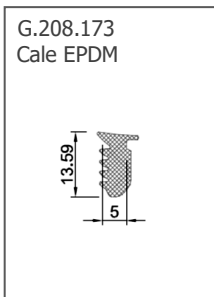
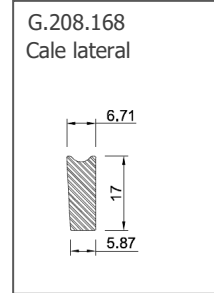
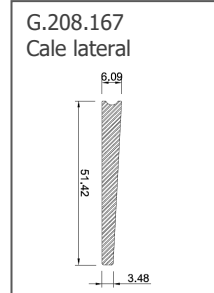
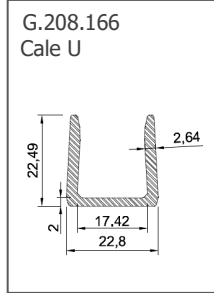
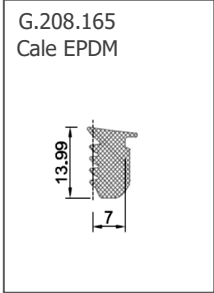
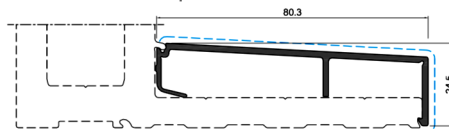
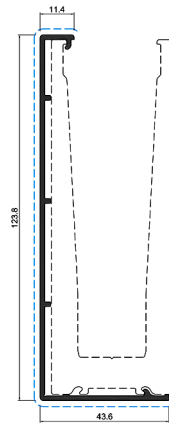


APPLICATION SUR DALLE

C.200 SAFEGLASS



C.200.005



SAFEGLASS

TRAITEMENT DE SURFACE

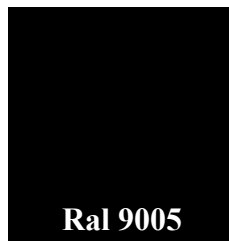
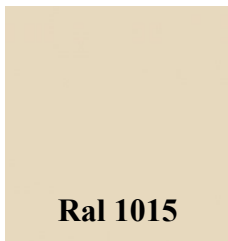
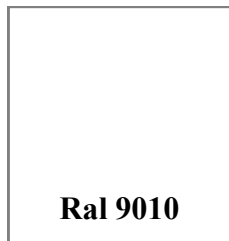


Dans ce contexte, il existe en Europe l'organe Qualanod qui définit les exigences de qualité générale, contrôle son respect, et certifie les producteurs.

Détient ce certificat depuis 1983 (label nr. 1405) et garanti sa conformité avec les directives de **Qualanod** et les normes.



COULEURS RAL standards.



SAFEGLOSS



WWW.BFC-LU.COM

1/2018

BFC

MATERIAUX S.A.R.L.